



PLV's Power Profiler™ Model HV-200

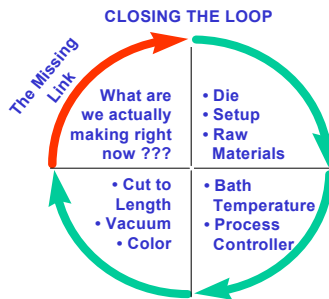
Get accurate and repeatable measurements from your extrusions



The HV-200 automatically measures what you are making while you make it, reducing scrap and improving your bottom line and product quality. This member of our Power Profiler™ family of products, accurately measures your profile from the cut end. Using our powerful dimensioning software the system gives you reliable dimensional data. PLV is dedicated to cost effective technology for advancing the ability to accurately measure extruded profiles.

Benefits:

- Reduction of scrap
- Reliable Data
- Improve process control
- Less time to make measurements
- Customer Satisfaction

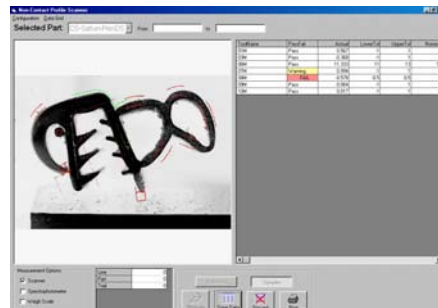


“ If I could only find a way to reduce the scrap that we make?”

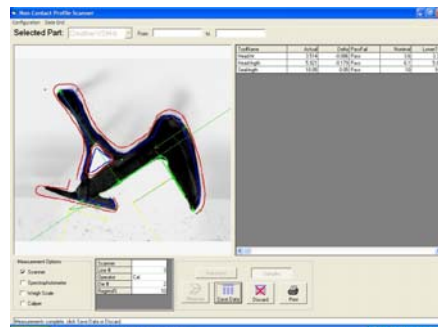
“When is QA going to have the cross section cut and measured so we can adjust the process?”

“It seems that each time we alter the process, we overshoot the mark. “

Screen Display Examples:



Mylar tolerance bands



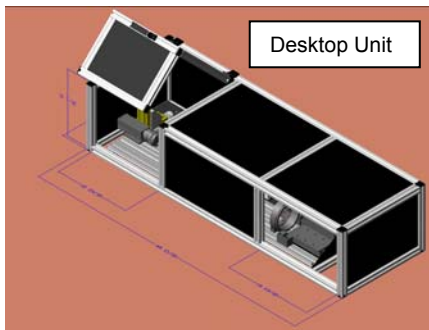
Bands with independent datums



Database with part images

HV-200 Specifications

- High speed asynchronous video camera
- P-IV 2.0 Ghz or better processor
- Fiber Optic lighting source
- Non-Contact Profiler™ software
- 17" inch LCD display screen
- Able to connect to networks and line controllers



How It Works:

The operator selects the profile from a pull down menu. Places the extrusion on the slide and presses the slide button. As the cut end of the extrusion reaches the sensor, a high speed, high-resolution video camera images the cut cross section. The image is processed for dimensional results and compared against the part specifications. The system displays the sample image and associated dimensions highlighting failures. The operator then chooses to print save or discard the data and image. The image display can include graphic outlines of the part and tolerance bands similar to a shadow-graph or optical comparator.

Call us today:

Engineering & Industrial Services, Inc.
2095 S. 150 E.
Logansport, IN 46947

Phone: (574) 722-3714
Fax: (574) 753-8635
Email: plv@eislogan.com
WebSite: www.eislogan.com

Micro Imaging Devices

